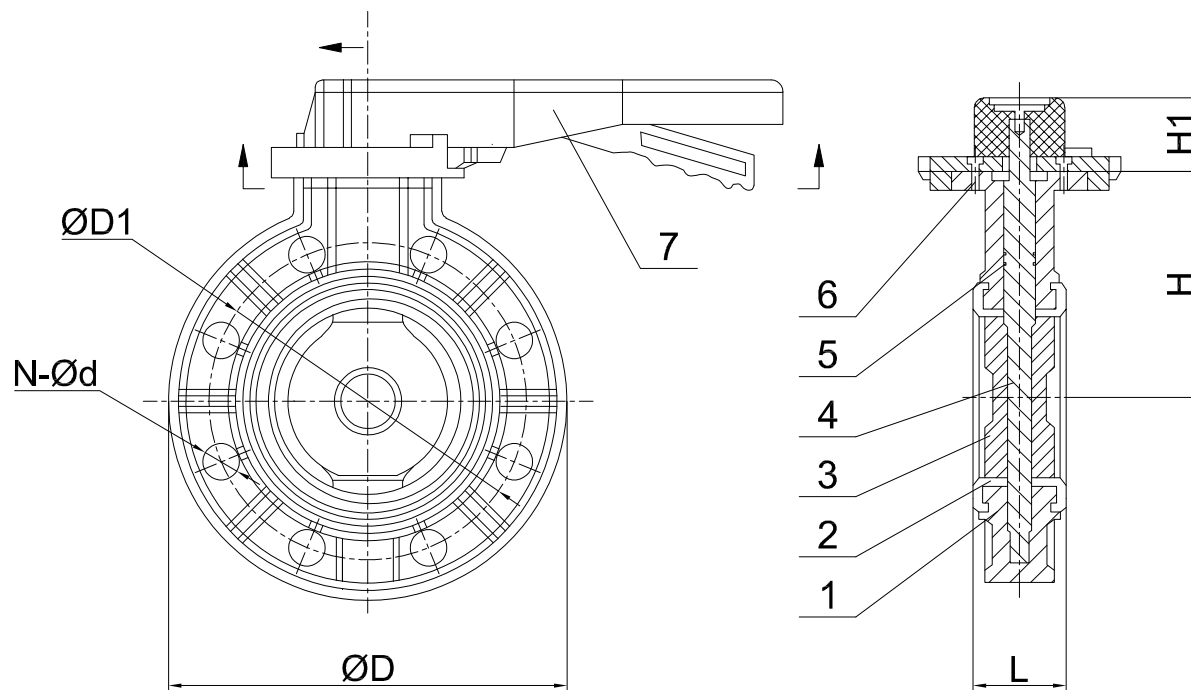


## Performance Standard

Nominal Bore	NPS	2"~6"
Nominal Pressure	Class	150LB

## Pressure Test

Sheel Test	1.50	Mpa
Seal Test	1.10	
Backseat Test	/	
Air Test	0.60	
Working Temperature		-29℃ ~ +100℃
Suitable Medium	Liquid, Oil, Gas. etc	



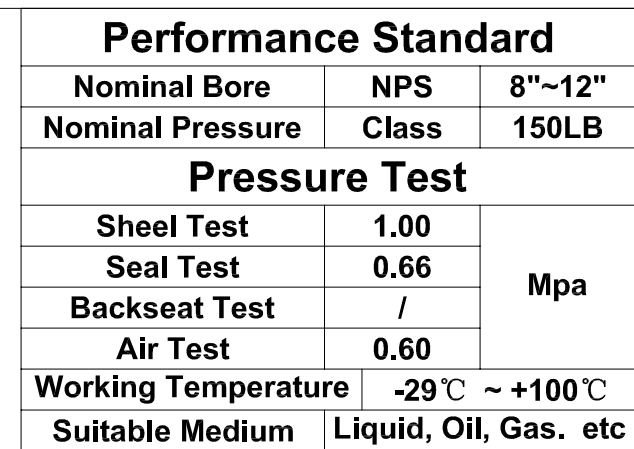
## Technical Requirements

1. Height dimension (H) standard as to: MFR-STD
2. Design & Manufacture as to: Q/BLSJ008-2003
3. Flange dimension conforms as to: ASME B16.5
4. Testing & Inspection as to: Q/BLSJ008-2003

NPS	DN	L	ØD	ØD1	N-Ød	H	H1
2"	50	40	Ø160	Ø120.7	4-Ø19	88	60
2 1/2"	65	46	Ø185	Ø139.7	4-Ø19	100	60
3"	80	48	Ø195	Ø152.4	4-Ø19	105	70
4"	100	57	Ø225	Ø190.5	8-Ø19	118	70
5"	125	62	Ø255	Ø215.9	8-Ø22	163	80
6"	150	67	Ø285	Ø241.3	8-Ø22	176	80

7	Handlever	PVDF
6	Bolt	SS
5	O-Ring	Viton
4	Stem	SS410
3	Disc	PVDF
2	Seat	Viton
1	Body	PVDF

No.	Part Name	Material
	PVDF Butterfly Valve Concentric	PTV Solutions®
		NPS 2"~6" Class 150LB
		Body: PVDF
		Disc: PVDF Stem: SS410
		Seat: Viton Seal: Viton
	Drawing No.:	



1. Height dimension (H) standard as to: MFR-STD
2. Design & Manufacture as to: Q/BLSJ008-2003
3. Flange dimension conforms as to: ASME B16.5
4. Testing & Inspection as to: Q/BLSJ008-2003

NPS	DN	L	ØD	ØD1	N-Ød	H	H1
8"	200	85	Ø345	Ø298.5	8-Ø22	210	93
10"	250	105	Ø410	Ø362.0	12-Ø25.5	240	93
12"	300	120	Ø480	Ø431.8	12-Ø25.5	272	106

[illegible]